



INDUSTRIAL

# ABOUT US

Meyer Shircore Architects have been a leading Perth based design firm for over 55 years offering a unique range of skills and services over a wide range of project types and sizes.

Suite 2, 437 Roberts Road  
Subiaco WA 6008

**Postal Address**

PO Box 1294  
Subiaco WA 6904

**T** 08 9381 8511  
**F** 08 9388 1339  
**E** [msa@meyershircore.com.au](mailto:msa@meyershircore.com.au)

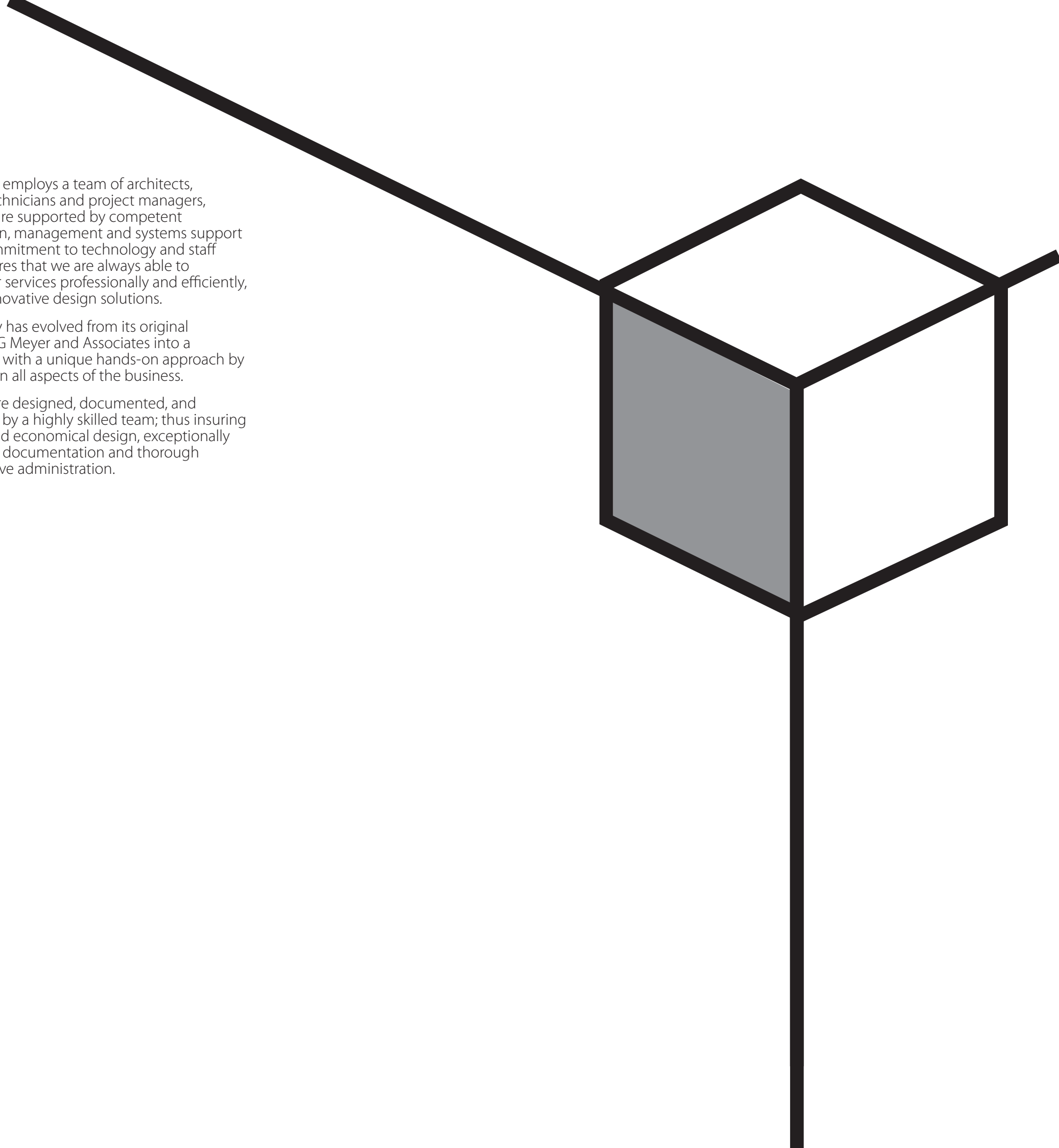
[meyershircore.com.au](http://meyershircore.com.au)

[instagram.com/meyershircore](https://www.instagram.com/meyershircore)

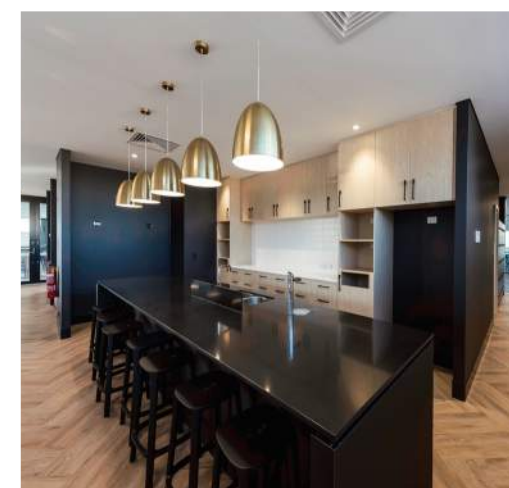
The practice employs a team of architects, designers, technicians and project managers, all of whom are supported by competent administration, management and systems support staff. Our commitment to technology and staff training ensures that we are always able to complete our services professionally and efficiently, delivering innovative design solutions.

The company has evolved from its original inception as G Meyer and Associates into a dynamic firm with a unique hands-on approach by the partners in all aspects of the business.

All projects are designed, documented, and administered by a highly skilled team; thus insuring innovative and economical design, exceptionally high levels of documentation and thorough comprehensive administration.







# SCHENCK OFFICE & WORKSHOP

SITE 207 MARRIOT ROAD / JANDAKOT  
COMPLETED MAY 2020

SCHENCK PROCESS REQUIRED A NEW FACILITY TO AMALGAMATE THEIR EXISTING OPERATION SPREAD AROUND PERTH. THIS DEVELOPMENT INCLUDES A 10,560M<sup>2</sup> WAREHOUSE AND WORKSHOP FOR THE REFURBISHMENT AND FABRICATION OF THEIR WEIGHING, SCREENING, AND CONVEYING EQUIPMENT USED IN THE RESOURCE INDUSTRY.

THE WORKSHOP INCLUDES MULTIPLE OVERHEAD GANTRY CRANES FROM 10 TONNE TO 40 TONNE IN ADDITION TO JIB CRANES. THE FACILITY INCLUDES STATE OF THE ART WASH DOWN, BLAST ROOMS, AND PAINT SHOPS. THE SINGLE LEVEL ADMINISTRATION BUILDING OF 1,800M<sup>2</sup> OFFERS A-GRADE EQUIVALENT OFFICE ACCOMODATION.





# OFFICE & WAREHOUSE

4 TEMPERLEY CLOSE / WELSHPOOL  
COMPLETED DECEMBER 2019

COXON GROUP, A SIGNIFICANT INDUSTRIAL DEVELOPER ENGAGED MEYER SHIRCORE TO DESIGN A SERIES OF INDUSTRIAL BUILDINGS FOR INDIVIDUAL TENANTS ON AN EXISTING WELSHPOOL SITE. THE BUILDINGS VARY IN SIZE FROM 1,650M<sup>2</sup>-6,265M<sup>2</sup> AND WERE BUILT PROGRESSIVELY TO HOUSE TENANTS SUCH AS ARB AND UNITED FASTENERS.





# CLEANAWAY MATERIAL RECOVERY PROCESSING PLANT

72 HYNE ROAD / SOUTH GUILDFORD  
COMPLETED APRIL 2017

A MATERIALS RECOVERY FACILITY (MRF), WAREHOUSE, TRUCK DEPOT AND ANCILLARY OFFICE FOR INTERNATIONAL WASTE MANAGEMENT PROVIDER CLEANAWAY.

MEYER SHIRCORE PROVIDED FULL ARCHITECTURAL SERVICES FOR THE DEVELOPER AND LIAISED CLOSELY WITH THE TENANT CLEANAWAY, TO SATISFY THEIR COMPLEX EQUIPMENT AND SERVICE REQUIREMENTS.

THE NEW MRF HAS THE CAPACITY TO PROCESS THE PERTH METROPOLITAN AREA'S ENTIRE HOUSEHOLD RECYCLABLE WASTE AND IS THE MOST HIGH-TECH RECYCLING FACILITY IN THE SOUTHERN HEMISPHERE.



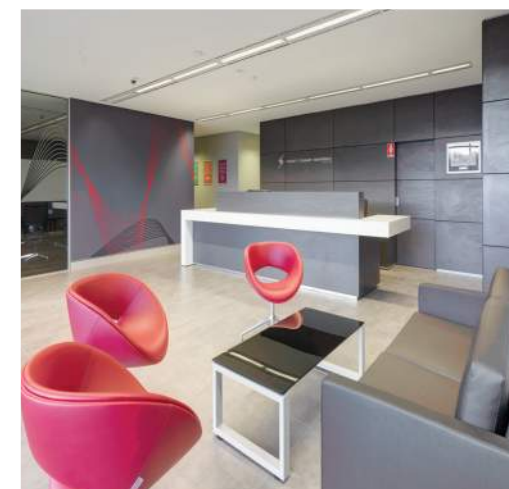


# ST VINCENT DE PAUL DISTRIBUTION CENTRE

BAILE ROAD / CANNINGTON  
COMPLETED OCTOBER 2016

THE ST. VINCENT DE PAUL PROJECT INVOLVES THE DESIGN OF A 5,000M<sup>2</sup> DISTRIBUTION WAREHOUSE FACILITY WITH AN ATTACHED 960M<sup>2</sup> STATE OF THE ART HEAD OFFICE AND A 300M<sup>2</sup> RETAIL OUTLET. THIS DEVELOPMENT WAS REQUIRED BY ST. VINCENT DE PAUL TO ACCOMMODATE THE FORECAST GROWTH AND TO CONSOLIDATE AND CENTRALIZE HEAD OFFICE FUNCTIONS THAT ARE CURRENTLY SEPARATED FROM THE EXISTING DEPOT.





# WEST COAST ENERGY

20 ORION ROAD / JANDAKOT  
COMPLETED JULY 2014

THE WEST COAST ENERGY BUILDING INCLUDES OFFICE AND WORKSHOP FACILITIES AS WELL AS AMPLE HARDSTAND FOR STORAGE & FUTURE EXPANSION. THE BOLD GEOMETRY OF THE EXTERIOR OF THE OFFICE BUILDING IS CARRIED THROUGH TO THE INTERIOR.

MEYER SHIRCORE PROVIDED FULL ARCHITECTURAL SERVICES FOR THE 2,250M<sup>2</sup> WORKSHOP AND 1,000M<sup>2</sup> OFFICE LOCATED WITHIN THE JANDAKOT AIRPORT COMMERCIAL PRECINCT.





# HALLIBURTON WORKSHOP & WAREHOUSE

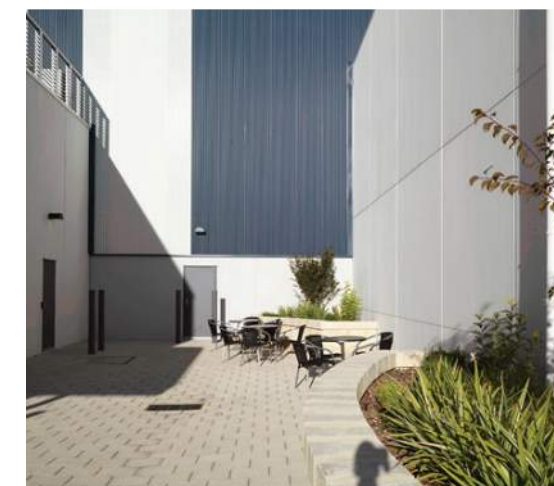
CORNER KAREL AVENUE & MARRIOTT ROAD / JANDAKOT  
COMPLETED JUNE 2012

HALLIBURTON IS ONE OF THE WORLD'S LARGEST PROVIDERS OF PRODUCTS AND SERVICES TO THE ENERGY INDUSTRY WITH OPERATIONS IN APPROXIMATELY 80 COUNTRIES AROUND THE WORLD.

THE 18,000M<sup>2</sup> FACILITY AT JANDAKOT COMPRISES MULTI-LEVEL WORKSHOP, STORAGE, LABORATORY AND AMENITIES FOR SEVEN HALLIBURTON DIVISIONS. THE BUILDING INCLUDES TEST PITS AND OVERHEAD CRANES OF VARIOUS LOADS AND HOOK HEIGHTS. DANGEROUS GOODS STORAGE AND WASH BAYS ARE LOCATED WITHIN THE CONCRETE HARDSTAND AREA TO THE PERIMETER. SECURE ACCESS TO THE SITE IS PROVIDED VIA A GUARDHOUSE OFF MARRIOTT ROAD.

A TWO LEVEL OFFICE BUILDING IS PLANNED FOR THE NEXT STAGE OF THIS DEVELOPMENT.



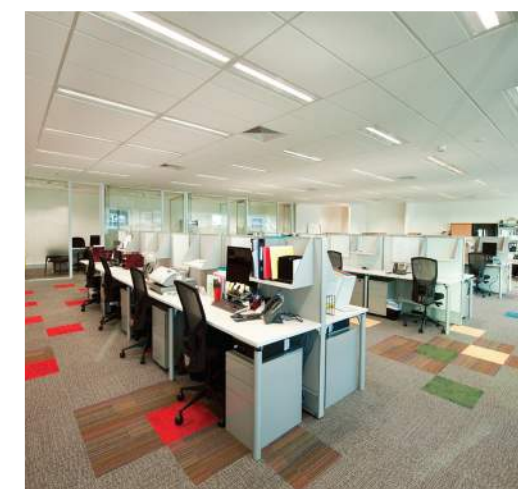


# GE OIL & GAS

5 COMPASS ROAD / JANDAKOT  
COMPLETED JANUARY 2012

AS PART OF THE GE AUSTRALIA'S NEW REGIONAL SERVICE HUB LOCATED AT JANDAKOT AIRPORT, THIS FACILITY INCLUDES ADVANCED WORKSHOPS, A LARGE WAREHOUSE AND ACCOMPANYING ADMINISTRATION BUILDINGS, MAKING IT THE LARGEST INDIVIDUAL OEM SUPPORT FACILITY IN AUSTRALIA DELIVERING AN EXTENSIVE RANGE OF EQUIPMENT AND TOOLING SERVICES TO THEIR CUSTOMERS.





# VIRIDIAN GLASS

5 COMPASS ROAD / JANDAKOT  
COMPLETED JANUARY 2012

VIRIDIAN GLASS REQUIRED A PURPOSE-BUILT GLASS PROCESSING AND DISTRIBUTION CENTRE TO BETTER SERVICE THE WA MARKET. THIS 13,550M<sup>2</sup> STEEL AND CONCRETE TILT-PANEL STRUCTURE WAS SPECIFICALLY DESIGNED TO BE DIMENSION PERFECT FOR VIRIDIAN'S VARIOUS MANUFACTURING PROCESSES AND ITS STORAGE, RECYCLING, AND DISTRIBUTION REQUIREMENTS. THE DEVELOPMENT WAS DESIGNED TO PROVIDE FOR VIRIDIAN'S VARIOUS GLASS PRODUCTION PROCESSES, AS WELL AS DISTRIBUTION, STORAGE AND RECYCLING REQUIREMENTS.

THOSE REQUIREMENTS INCLUDE THE OPERATION OF TWO FURNACES AND THE EXTENSIVE MOVEMENT OF GOODS, CONTAINERS, AND VEHICLES IN AND AROUND THE BUILDING.





# MATRIX COMPOSITES & ENGINEERING

150 QUILL WAY / HENDERSON  
COMPLETED MARCH 2011

INCLUDES 5 X MANUFACTURING AND TESTING WAREHOUSES, SALES AND ADMINISTRATION BUILDING, SERVICE & STORAGE FACILITIES. MATRIX OPENED THEIR NEW PRODUCTION FACILITY IN JUNE 2011 AFTER COMPLETING THEIR EXTENSIVE FITOUT. THE STATE OF THE ART HENDERSON FACILITY DESIGNED BY MEYER SHIRCORE ARCHITECTS IS SET TO FURTHER ENHANCE THE POSITION OF MATRIX AS A LEADING AUSTRALIAN MANUFACTURER OF CRITICAL ENGINEERED PRODUCTS FOR THE OFFSHORE, SUBSEA, MINING AND DEFENCE INDUSTRIES. THE FACILITY COMPRISES FIVE INDIVIDUAL BUILDINGS TO CATER FOR EACH ELEMENT OF THE PRODUCTION PROCESS AND INCLUDES TEST PITS AND NUMEROUS OVERHEAD CRANES. DANGEROUS GOODS STORES, WASH DOWN AND TANK STORAGE AREAS ARE DISTRIBUTED THROUGHOUT THE 28,850M<sup>2</sup> HARDSTAND.



